

# Discharge Measurement Summary

**Site name** Ecanal10  
**Site number** 02  
**Operator(s)** SWeber  
**File name** EastCanal\_20230905\_1411.ft  
**Comment**

<b>Start time</b>	9/5/2023 2:11 PM	<b>Sensor type</b>	Top Setting
<b>End time</b>	9/5/2023 3:10 PM	<b>Handheld serial number</b>	FT2H2219029
<b>Start location latitude</b>	42.809	<b>Probe serial number</b>	FT2P2219014
<b>Start location longitude</b>	-118.869	<b>Probe firmware</b>	1.30
<b>Calculations engine</b>	FlowTracker2	<b>Handheld software</b>	1.7

<b># Stations</b>	<b>Avg interval (s)</b>	<b>Total discharge (m<sup>3</sup>/s)</b>
25	40	0.5258

<b>Total width (m)</b>	<b>Total area (m<sup>2</sup>)</b>	<b>Wetted Perimeter (m)</b>
3.688	1.42035	4.298

<b>Mean SNR (dB)</b>	<b>Mean depth (m)</b>	<b>Mean velocity (m/s)</b>
32	0.385	0.3702

<b>Mean temp (°C)</b>	<b>Max depth (m)</b>	<b>Max velocity (m/s)</b>
16.905	0.433	0.5151

Discharge Uncertainty		
Category	ISO	IVE
Accuracy	1.0%	1.0%
Depth	0.1%	1.7%
Velocity	0.3%	1.5%
Width	0.1%	0.1%
Method	1.7%	
# Stations	2.0%	
Overall	2.8%	2.5%

<b>Discharge equation</b>	Mid Section
<b>Discharge uncertainty</b>	IVE
<b>Discharge reference</b>	Rated

Data Collection Settings	
<b>Salinity</b>	0.000 PSS-78
<b>Temperature</b>	-
<b>Sound speed</b>	-
<b>Mounting correction</b>	0.000 %

## Summary overview

No changes were made to this file  
Quality control warnings



# Discharge Measurement Summary

**Site name** Ecanal10  
**Site number** 02  
**Operator(s)** SWeber  
**File name** EastCanal\_20230905\_1411.ft  
**Comment**

## Station Warning Settings

**Station discharge OK**

Station discharge < 5.00%

**Station discharge caution**

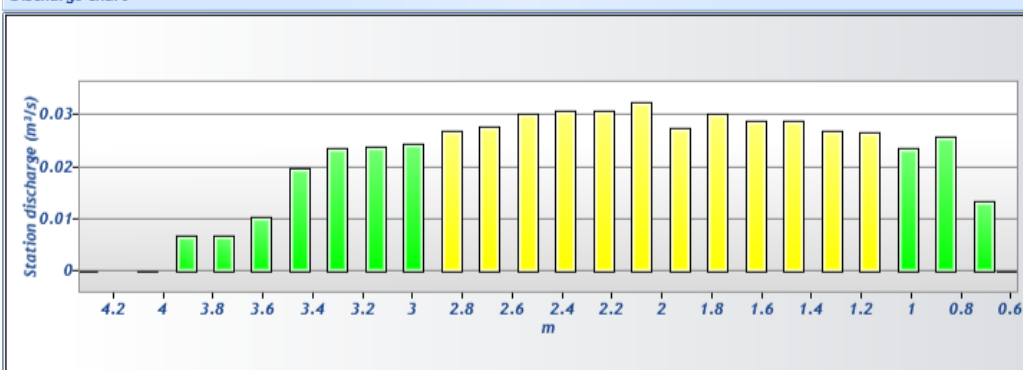
5.00% >= Station discharge < 10.00%

**Station discharge warning**

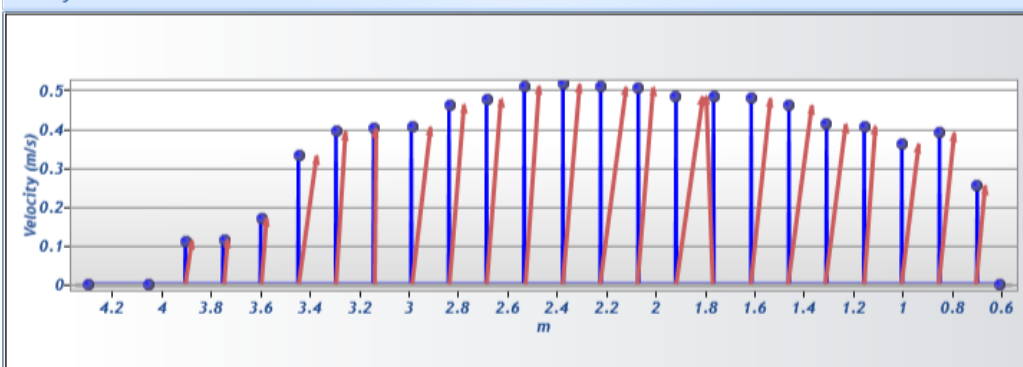
Station discharge >= 10.00%



Discharge chart

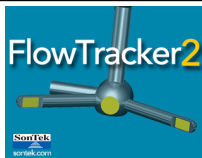


Velocity chart



Depth chart



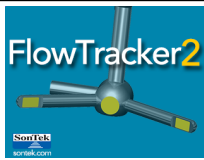


# Discharge Measurement Summary

**Site name** Ecanal10  
**Site number** 02  
**Operator(s)** SWeber  
**File name** EastCanal\_20230905\_1411.ft  
**Comment**

## Measurement results

St#	Time	Location (m)	Method	Depth (m)	%Depth	Measured Depth (m)	Samples	Velocity (m/s)	Correcti on	Mean Velocity (m/s)	Area (m²)	Flow (m³/s)	%Q	
0	2:11 PM	0.610	None	0.000	0.0000	0.000	0	0.0000	1.0000	0.2546	0.00000	0.0000	0.00	✓
1	2:12 PM	0.701	0.6	0.427	0.6000	0.256	80	0.2546	1.0000	0.2546	0.05203	0.0132	2.52	✓
2	2:16 PM	0.853	0.6	0.433	0.6000	0.260	80	0.3902	1.0000	0.3902	0.06596	0.0257	4.90	✓
3	2:19 PM	1.006	0.6	0.430	0.6000	0.258	80	0.3620	1.0000	0.3620	0.06550	0.0237	4.51	✓
4	2:21 PM	1.158	0.6	0.430	0.6000	0.258	80	0.4059	1.0000	0.4059	0.06550	0.0266	5.06	✓
5	2:23 PM	1.311	0.6	0.427	0.6000	0.256	80	0.4129	1.0000	0.4129	0.06503	0.0268	5.11	✓
6	2:32 PM	1.463	0.6	0.411	0.6000	0.247	80	0.4609	1.0000	0.4609	0.06271	0.0289	5.50	✓
7	2:34 PM	1.615	0.6	0.396	0.6000	0.238	80	0.4785	1.0000	0.4785	0.06039	0.0289	5.50	✓
8	2:36 PM	1.768	0.6	0.408	0.6000	0.245	80	0.4835	1.0000	0.4835	0.06225	0.0301	5.72	✓
9	2:38 PM	1.920	0.6	0.372	0.6000	0.223	80	0.4839	1.0000	0.4839	0.05667	0.0274	5.22	✓
10	2:40 PM	2.073	0.6	0.421	0.6000	0.252	80	0.5064	1.0000	0.5064	0.06410	0.0325	6.17	✓
11	2:43 PM	2.225	0.6	0.396	0.6000	0.238	80	0.5072	1.0000	0.5072	0.06039	0.0306	5.83	✓
12	2:45 PM	2.377	0.6	0.393	0.6000	0.236	80	0.5151	1.0000	0.5151	0.05992	0.0309	5.87	✓
13	2:47 PM	2.530	0.6	0.390	0.6000	0.234	80	0.5098	1.0000	0.5098	0.05946	0.0303	5.77	✓
14	2:49 PM	2.682	0.6	0.381	0.6000	0.229	80	0.4762	1.0000	0.4762	0.05806	0.0276	5.26	✓
15	2:51 PM	2.835	0.6	0.381	0.6000	0.229	80	0.4625	1.0000	0.4625	0.05806	0.0269	5.11	✓
16	2:52 PM	2.987	0.6	0.396	0.6000	0.238	80	0.4047	1.0000	0.4047	0.06039	0.0244	4.65	✓
17	2:54 PM	3.139	0.6	0.393	0.6000	0.236	80	0.4002	1.0000	0.4002	0.05992	0.0240	4.56	✓
18	2:57 PM	3.292	0.6	0.393	0.6000	0.236	80	0.3938	1.0000	0.3938	0.05992	0.0236	4.49	✓
19	2:59 PM	3.444	0.6	0.390	0.6000	0.234	80	0.3310	1.0000	0.3310	0.05946	0.0197	3.74	✓
20	3:01 PM	3.597	0.6	0.396	0.6000	0.238	80	0.1701	1.0000	0.1701	0.06039	0.0103	1.95	✓
21	3:03 PM	3.749	0.6	0.390	0.6000	0.234	80	0.1152	1.0000	0.1152	0.05946	0.0068	1.30	✓
22	3:05 PM	3.901	0.6	0.399	0.6000	0.240	80	0.1120	1.0000	0.1120	0.06085	0.0068	1.30	✓
23	3:07 PM	4.054	0.6	0.424	0.6000	0.254	80	-0.0006	1.0000	-0.0006	0.08394	-0.0001	-0.01	✓
24	3:10 PM	4.298	None	0.000	0.0000	0.000	0	0.0000	1.0000	-0.0006	0.00000	0.0000	0.00	✓

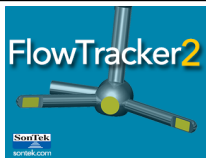


# Discharge Measurement Summary

Site name	Ecanal10
Site number	02
Operator(s)	SWeber
File name	EastCanal_20230905_1411.ft
Comment	

Quality Control Settings	
Maximum depth change	50.00%
Maximum spacing change	100.00%
SNR threshold	10 dB
Standard error threshold	0.0100 m/s
Spike threshold	10.00%
Maximum velocity angle	20.0 deg
Maximum tilt angle	5.0 deg

Quality control warnings							
St#	Time	Location (m)	Method	Depth (m)	%Depth	Measured Depth (m)	Warnings
1	2:12 PM	0.701	0.6	0.427	0.6000	0.256	Water Depth > QC
23	3:07 PM	4.054	0.6	0.424	0.6000	0.254	Boundary Interference
24	3:10 PM	4.298	None	0.000	0.0000	0.000	Water Depth > QC



# Discharge Measurement Summary

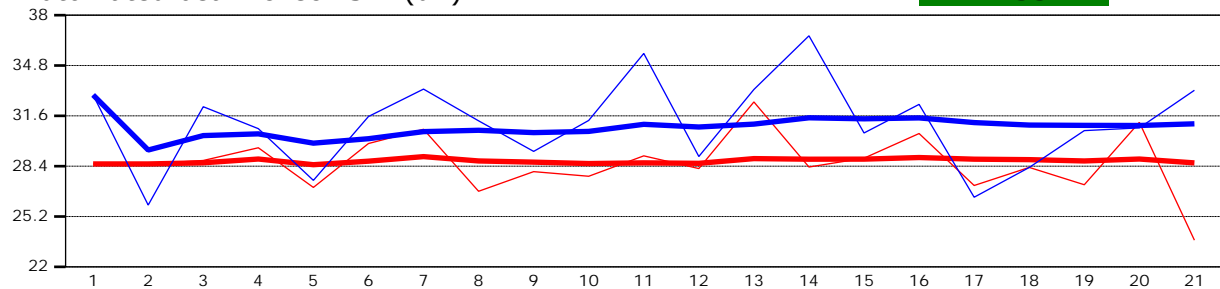
**Site name** Ecanal10  
**Site number** 02  
**Operator(s)** SWeber  
**File name** EastCanal\_20230905\_1411.ft  
**Comment**

<b>Beam 1</b>	
<b>Beam 2</b>	

Automated beam check Start time 9/5/2023 2:10:43 PM

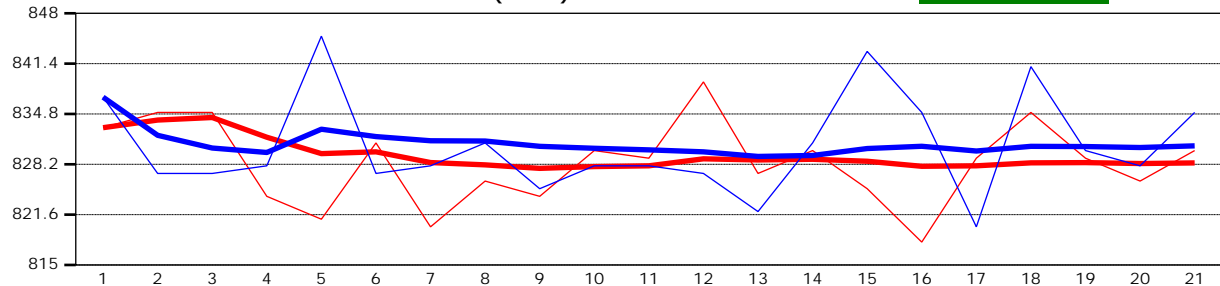
Automated beam check SNR(dB)

PASS



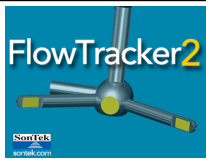
Automated beam check Noise level(cnts)

PASS



## Automated beam check Quality control warnings

No quality control warnings



# Discharge Measurement Summary

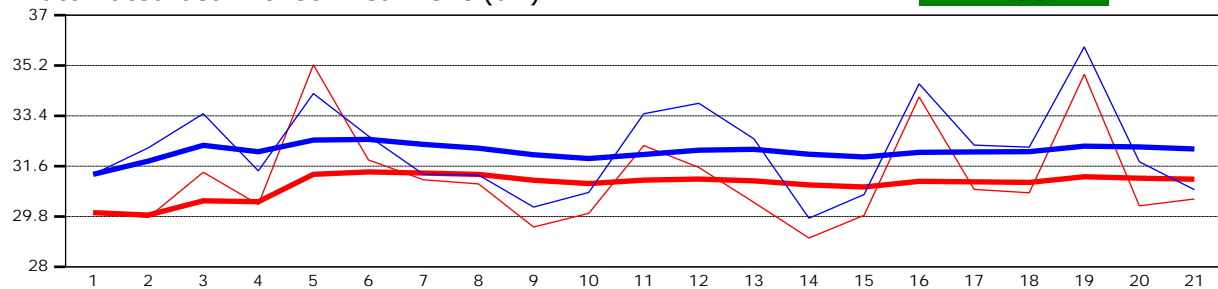
**Site name** Ecanal10  
**Site number** 02  
**Operator(s)** SWeber  
**File name** EastCanal\_20230905\_1411.ft  
**Comment**

<b>Beam 1</b>	
<b>Beam 2</b>	

Automated beam check Start time 9/5/2023 2:10:43 PM

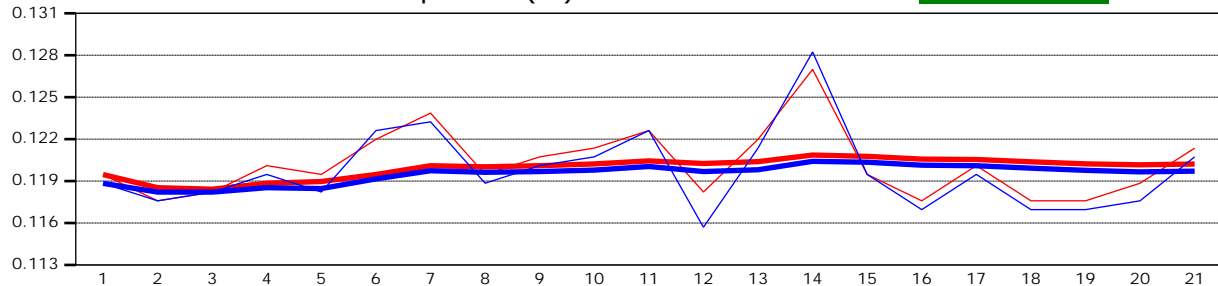
Automated beam check Peak level(dB)

PASS



Automated beam check Peak position(m)

PASS



## Automated beam check Quality control warnings

No quality control warnings